

CS-21-183

Contract No. CM2785-CO2

CHANGE ORDER APPROVAL FORM

PROJECT: William Burgess Boulevard Extension

CHANGE ORDER NUMBER: CO2

DATE: 02/04/2022

CONTRACT NUMBER: CM2785 WORK AUTHORIZATION NUMBER: N/A

TO CONTRACTOR: GAI Consultants, Inc.

Account No(s). 63470541-563365 WBEXT

Description: Additional design tasks for JEA Forcemain design. To be paid for by JEA in accordance with MOU agreement.

Reason for Change Order: Additional services added by JEA and to be paid for by JEA.

Original Contract Sum..... \$ 790,235.00

Net Change by Previous Change Order/Supplemental Agreement. \$ 326,235.00

Contract Sum Prior to This Change Order..... \$ 1,116,470.00

Amount of this Change Order (INCREASE)..... \$ 50,915.00

New Contract Sum Including this Change Order..... \$ 1,167,385.00

The Contract Time will remain unchanged

0 (zero) days

Previous Substantial Completion: 06/09/2022

Previous Final Completion: N/A

New Substantial Completion: 06/09/2022

New Final Completion: N/A

APPROVED BY: Robert Companion DATE: 2/10/2022
Department Head

APPROVED BY: Janice Adams DATE: 2/11/2022
Procurement Department

APPROVED BY: Marshall Eyerman DF DATE: 2/14/2022
Office of Management and Budget

APPROVED BY: Denise C. May, Esq., BCS DATE: 2/14/2022
County Attorney's Office

APPROVED BY: [Signature] DATE: 2/14/2022
Taco E. Pope, AICP, County Manager

APPROVED BY: [Signature] DATE: 3/28/22
Aaron C. Bell, Chairman

ATTEST: *See below. DATE: 3/28/22
John A. Crawford, Clerk of Courts

ATTESTATION: Only to Authenticity as to Chairman's Signature:

[Signature]
John A. Crawford, Ex-Officio Clerk

CHANGE ORDER REQUEST FORM

William Burgess Boulevard Extension
PROJECT

No. CO-2

02/10/2022

NASSAU COUNTY BOARD OF COUNTY COMMISSIONERS
COUNTY Contract / Purchase Order No.: CM2785
CONTRACTOR: N/A

ENGINEER / ARCHITECT: GAI Consultants, Inc.

The undersigned parties agree to amend this Contract to add \$50,915 in consideration and add scope of work items to include additional JEA work in accordance with the MOU for William Burgess Boulevard Extension. All work will be paid for by JEA via wire transfer once this change order is full approved.

Attachments: Email with change order breakdown

<p>CHANGE IN CONTRACT PRICE:</p> <p>Original Contract Price</p> <p>\$ <u>790,235.00</u></p>	<p>CHANGE IN CONTRACT TIMES:</p> <p>Original Contract Times <u>547 days</u> <u>06/09/2021</u></p> <p>Ready for Final Payment: <u>N/A</u> <u>N/A</u> (days and dates)</p>
<p>Net change from previous Change Orders No. <u>A1</u> to No. <u>CO1</u></p> <p>\$ <u>326,235.00</u></p>	<p>Net change from previous Change Orders No. <u>A1</u> to No. <u>A1</u></p> <p><u>365</u> (days)</p>
<p>Contract Price prior to this Change Order</p> <p>\$ <u>1,116,470.00</u></p>	<p>Contract Times Prior to this Change Order</p> <p>Substantial Completion: <u>912 days/06/09/2022</u></p> <p>Ready for Final Payment: <u>N/A</u> (days and dates)</p>
<p>Net Increase (decrease) of this Change Order</p> <p>\$ <u>50,915.00</u></p>	<p>Net Increase (decrease) of this Change Order</p> <p><u>0 days</u> (days)</p>
<p>Contract Price with all approved Change Orders</p> <p>\$ <u>1,167,385</u></p>	<p>Contract Times with all approved Change Orders</p> <p>Substantial Completion: <u>912 days/06/09/2022</u></p> <p>Ready for Final Payment: <u>N/A</u> (days and dates)</p>

RECOMMENDED:
By: Ronald F. Hoogland
Engineer/Architect (Authorized Signature)
Date: 2/10/2022

APPROVED:
By: Robert Companion
COUNTY (Authorized Signature)
Date: 2/10/2022

ACCEPTED:
By: N/A
Contractor (Authorized Signature)
Date: _____

December 20, 2021

Michael Williams, PE
Water/ Wastewater Engineer
W/WW Project Engineering & Construction
21 West Church Street, T-4
Jacksonville, Florida 32202

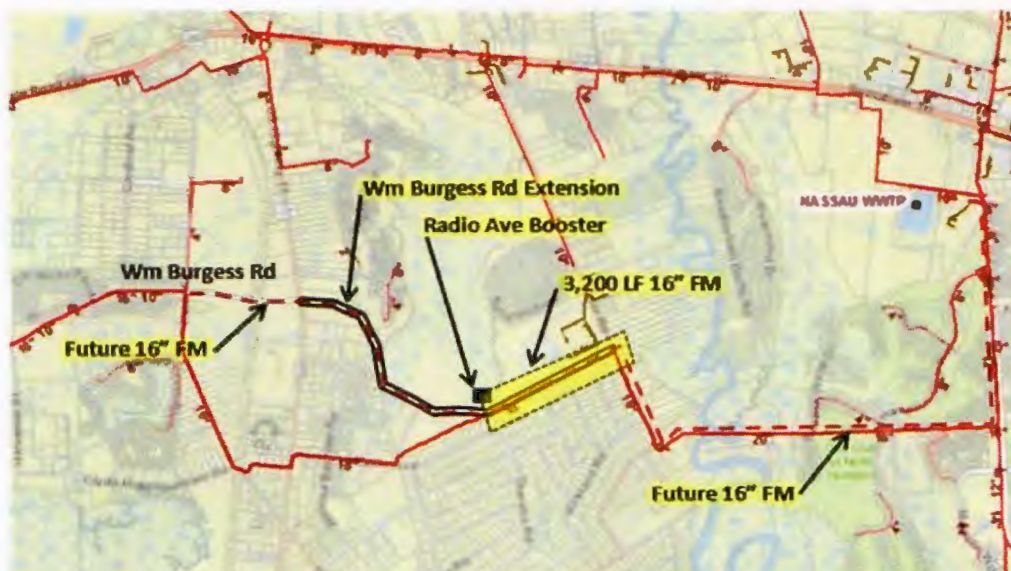
Subject: JEA Force Main Services for William Burgess Blvd. Extension

Dear Mr. Williams,

GAI Consultants, Inc. (GAI) respectfully submits the following Scope of Services and Fee Proposal for subject contract for a lump sum fee of **\$50,915**. The assignment is added task to the JEA WM CO included under the roadway William Burgess Blvd. Extension (WBE) project by Nassau County (Bid No. NC19-016). The JEA plans and specifications will be let for construction simultaneously as part of the same construction contract.

Scope of Services for the new force main design are as follows:

- Approximately 3200 LF of new 16" force main will be installed along the new WBE right of way.
- Coordinate with Radio Ave Booster Station
- Install on the north side of the William Burgess Blvd.
- Consider future connections to the east and west (refer to diagram below)
- JEA Force Main Permit review and DEP permit submittal will be required.
- The new force main is proposed to be installed by open cut installation.
- Coordinate with County MOT plan.
- GAI will provide a line and grade schematic of the force main for JEA to review. The alignment and route agreed upon will then progress into designs stage for 90% submittal, followed by 100% plan set for final review and bidding. The full size 24"x36" paper copy will be submitted to the JEA for permit review and DEP permit approval for subsequent approval and release of bid documents for construction.



Michael Williams, PE
William Burgess Fee Proposal
12/20/21

Contract No. CM2785-CO2

Exclusions:

- Geotechnical Investigations. Geotechnical data extracted from the roadway design will be utilized.
- Post Design Services.

Design Schedule:

Work will be combined with JEA WM plans and there follow current schedule. The schematic layout will be submitted within 1 month of NTP.

Thank you for the opportunity to submit this proposal. We trust that this proposal will meet your expectations. Please if you have any questions feel free to call me at 904-237-2466.

Sincerely,



Ronald Hoogland, P.E.
Director of Engineering

William Budget Book 18 Form Main Dry Line From Theresa CL to Miller No. 1200 1/1

CAI Estimate by

8/14

11/29/2021

Sheet	Title	Principal (dollar)	Eng (dollar)	CGI 11/yr (dollar)	Senior Project Engineer (dollar)	Engineer (dollar)	Use Car (dollar)	ET (dollar)	CAI (dollar)	Travel (dollar)	PM	Senior CUD	Senior Field Crew	Label Fee	Notes
1	Table 1 - Project Definition, Project Kickoff and Project Management	1,000.00	250.00	575.00	1,000.00	1,000.00	1,000.00	1,000.00	1,000.00	1,000.00	1,000.00	1,000.00	1,000.00	1,000.00	
2	Table 2 - Conceptual Design - 15% Plan and Grade complete	1,500.00	1,500.00	1,500.00	1,500.00	1,500.00	1,500.00	1,500.00	1,500.00	1,500.00	1,500.00	1,500.00	1,500.00	1,500.00	
3	Table 3 - Project Design Development Stage - 15% to 30% (Per effort)	800.00	800.00	800.00	800.00	800.00	800.00	800.00	800.00	800.00	800.00	800.00	800.00	800.00	
4	Table 4 - Project Final Design - 60% to 100% (15% effort)	200.00	1,300.00	1,500.00	1,500.00	1,500.00	1,500.00	1,500.00	1,500.00	1,500.00	1,500.00	1,500.00	1,500.00	1,500.00	
5	Table 5 - 184 (M) and 607 Utility Permit	0	1,170.00	2,380.00	2,380.00	2,380.00	2,380.00	2,380.00	2,380.00	2,380.00	2,380.00	2,380.00	2,380.00	2,380.00	
6	Table 6 - Building Services (paid per 100 sqm work only)	0	780.00	680.00	300.00	300.00	300.00	300.00	300.00	300.00	300.00	300.00	300.00	300.00	
7	CGI per table	1,000.00	12,000.00	12,750.00	6,000.00	5,750.00	5,750.00	5,750.00	5,750.00	5,750.00	5,750.00	5,750.00	5,750.00	5,750.00	
8	Hours per cent distribution	2%	12%	21%	11%	11%	16%	15%	11%	3%	0%	0%	0%	0%	
Summary of all production hours below															
1	Plan Preparation	0	0	2	0	0	0	0	0	0	0	0	0	0	
2	Concept Review	0	0	2	0	0	0	0	0	0	0	0	0	0	
3	General Notes (review)	0	0	2	0	0	0	0	0	0	0	0	0	0	
4	General Notes (prepare)	0	0	2	0	0	0	0	0	0	0	0	0	0	
5	Force Main Plan and Profile (1" = 20' scale)	0	0	24	0	0	0	0	0	0	0	0	0	0	
6	Sanitary and Sewerage Equal Plan Sheets (no change)	0	0	18	0	0	0	0	0	0	0	0	0	0	
7	Sanitary and Sewerage Equal Plan Sheets (no change)	0	0	18	0	0	0	0	0	0	0	0	0	0	
8	Sanitary and Sewerage Equal Plan Sheets (no change)	0	0	18	0	0	0	0	0	0	0	0	0	0	
9	Sanitary and Sewerage Equal Plan Sheets (no change)	0	0	18	0	0	0	0	0	0	0	0	0	0	
10	Sanitary and Sewerage Equal Plan Sheets (no change)	0	0	18	0	0	0	0	0	0	0	0	0	0	
11	Sanitary and Sewerage Equal Plan Sheets (no change)	0	0	18	0	0	0	0	0	0	0	0	0	0	
12	Sanitary and Sewerage Equal Plan Sheets (no change)	0	0	18	0	0	0	0	0	0	0	0	0	0	
13	Sanitary and Sewerage Equal Plan Sheets (no change)	0	0	18	0	0	0	0	0	0	0	0	0	0	
14	Sanitary and Sewerage Equal Plan Sheets (no change)	0	0	18	0	0	0	0	0	0	0	0	0	0	
15	Sanitary and Sewerage Equal Plan Sheets (no change)	0	0	18	0	0	0	0	0	0	0	0	0	0	
16	Sanitary and Sewerage Equal Plan Sheets (no change)	0	0	18	0	0	0	0	0	0	0	0	0	0	
17	Sanitary and Sewerage Equal Plan Sheets (no change)	0	0	18	0	0	0	0	0	0	0	0	0	0	
18	Sanitary and Sewerage Equal Plan Sheets (no change)	0	0	18	0	0	0	0	0	0	0	0	0	0	
19	Sanitary and Sewerage Equal Plan Sheets (no change)	0	0	18	0	0	0	0	0	0	0	0	0	0	
20	Sanitary and Sewerage Equal Plan Sheets (no change)	0	0	18	0	0	0	0	0	0	0	0	0	0	
21	Sanitary and Sewerage Equal Plan Sheets (no change)	0	0	18	0	0	0	0	0	0	0	0	0	0	
22	Sanitary and Sewerage Equal Plan Sheets (no change)	0	0	18	0	0	0	0	0	0	0	0	0	0	
23	Sanitary and Sewerage Equal Plan Sheets (no change)	0	0	18	0	0	0	0	0	0	0	0	0	0	
24	Sanitary and Sewerage Equal Plan Sheets (no change)	0	0	18	0	0	0	0	0	0	0	0	0	0	
25	Sanitary and Sewerage Equal Plan Sheets (no change)	0	0	18	0	0	0	0	0	0	0	0	0	0	
26	Sanitary and Sewerage Equal Plan Sheets (no change)	0	0	18	0	0	0	0	0	0	0	0	0	0	
27	Sanitary and Sewerage Equal Plan Sheets (no change)	0	0	18	0	0	0	0	0	0	0	0	0	0	
28	Sanitary and Sewerage Equal Plan Sheets (no change)	0	0	18	0	0	0	0	0	0	0	0	0	0	
29	Sanitary and Sewerage Equal Plan Sheets (no change)	0	0	18	0	0	0	0	0	0	0	0	0	0	
30	Sanitary and Sewerage Equal Plan Sheets (no change)	0	0	18	0	0	0	0	0	0	0	0	0	0	
31	Sanitary and Sewerage Equal Plan Sheets (no change)	0	0	18	0	0	0	0	0	0	0	0	0	0	
32	Sanitary and Sewerage Equal Plan Sheets (no change)	0	0	18	0	0	0	0	0	0	0	0	0	0	
33	Sanitary and Sewerage Equal Plan Sheets (no change)	0	0	18	0	0	0	0	0	0	0	0	0	0	
34	Sanitary and Sewerage Equal Plan Sheets (no change)	0	0	18	0	0	0	0	0	0	0	0	0	0	
35	Sanitary and Sewerage Equal Plan Sheets (no change)	0	0	18	0	0	0	0	0	0	0	0	0	0	
36	Sanitary and Sewerage Equal Plan Sheets (no change)	0	0	18	0	0	0	0	0	0	0	0	0	0	
37	Sanitary and Sewerage Equal Plan Sheets (no change)	0	0	18	0	0	0	0	0	0	0	0	0	0	
38	Sanitary and Sewerage Equal Plan Sheets (no change)	0	0	18	0	0	0	0	0	0	0	0	0	0	
39	Sanitary and Sewerage Equal Plan Sheets (no change)	0	0	18	0	0	0	0	0	0	0	0	0	0	
40	Sanitary and Sewerage Equal Plan Sheets (no change)	0	0	18	0	0	0	0	0	0	0	0	0	0	
41	Sanitary and Sewerage Equal Plan Sheets (no change)	0	0	18	0	0	0	0	0	0	0	0	0	0	
42	Sanitary and Sewerage Equal Plan Sheets (no change)	0	0	18	0	0	0	0	0	0	0	0	0	0	
43	Sanitary and Sewerage Equal Plan Sheets (no change)	0	0	18	0	0	0	0	0	0	0	0	0	0	
44	Sanitary and Sewerage Equal Plan Sheets (no change)	0	0	18	0	0	0	0	0	0	0	0	0	0	
45	Sanitary and Sewerage Equal Plan Sheets (no change)	0	0	18	0	0	0	0	0	0	0	0	0	0	
46	Sanitary and Sewerage Equal Plan Sheets (no change)	0	0	18	0	0	0	0	0	0	0	0	0	0	
47	Sanitary and Sewerage Equal Plan Sheets (no change)	0	0	18	0	0	0	0	0	0	0	0	0	0	
48	Sanitary and Sewerage Equal Plan Sheets (no change)	0	0	18	0	0	0	0	0	0	0	0	0	0	
49	Sanitary and Sewerage Equal Plan Sheets (no change)	0	0	18	0	0	0	0	0	0	0	0	0	0	
50	Sanitary and Sewerage Equal Plan Sheets (no change)	0	0	18	0	0	0	0	0	0	0	0	0	0	
51	Sanitary and Sewerage Equal Plan Sheets (no change)	0	0	18	0	0	0	0	0	0	0	0	0	0	
52	Sanitary and Sewerage Equal Plan Sheets (no change)	0	0	18	0	0	0	0	0	0	0	0	0	0	
53	Sanitary and Sewerage Equal Plan Sheets (no change)	0	0	18	0	0	0	0	0	0	0	0	0	0	
54	Sanitary and Sewerage Equal Plan Sheets (no change)	0	0	18	0	0	0	0	0	0	0	0	0	0	
55	Sanitary and Sewerage Equal Plan Sheets (no change)	0	0	18	0	0	0	0	0	0	0	0	0	0	
56	Sanitary and Sewerage Equal Plan Sheets (no change)	0	0	18	0	0	0	0	0	0	0	0	0	0	
57	Sanitary and Sewerage Equal Plan Sheets (no change)	0	0	18	0	0	0	0	0	0	0	0	0	0	
58	Sanitary and Sewerage Equal Plan Sheets (no change)	0	0	18	0	0	0	0	0	0	0	0	0	0	
59	Sanitary and Sewerage Equal Plan Sheets (no change)	0	0	18	0	0	0	0	0	0	0	0	0	0	
60	Sanitary and Sewerage Equal Plan Sheets (no change)	0	0	18	0	0	0	0	0	0	0	0	0	0	
61	Sanitary and Sewerage Equal Plan Sheets (no change)	0	0	18	0	0	0	0	0	0	0	0	0	0	
62	Sanitary and Sewerage Equal Plan Sheets (no change)	0	0	18	0	0	0	0	0	0	0	0	0	0	
63	Sanitary and Sewerage Equal Plan Sheets (no change)	0	0	18	0	0	0	0	0	0	0	0	0	0	
64	Sanitary and Sewerage Equal Plan Sheets (no change)	0	0	18	0	0	0	0	0	0	0	0	0	0	
65	Sanitary and Sewerage Equal Plan Sheets (no change)	0	0	18	0	0	0	0	0	0	0	0	0	0	
66	Sanitary and Sewerage Equal Plan Sheets (no change)	0	0	18	0	0	0	0	0	0	0	0	0	0	
67	Sanitary and Sewerage Equal Plan Sheets (no change)	0	0	18	0	0	0	0	0	0	0	0	0	0	
68	Sanitary and Sewerage Equal Plan Sheets (no change)	0	0	18	0	0	0	0	0	0	0	0	0	0	
69	Sanitary and Sewerage Equal Plan Sheets (no change)	0	0	18	0	0	0	0	0	0	0	0	0	0	
70	Sanitary and Sewerage Equal Plan Sheets (no change)	0	0	18	0	0	0	0	0	0	0	0	0	0	
71	Sanitary and Sewerage Equal Plan Sheets (no change)	0	0	18	0	0	0	0	0	0	0	0	0	0	
72	Sanitary and Sewerage Equal Plan Sheets (no change)	0	0	18	0	0	0	0	0	0	0	0	0	0	
73	Sanitary and Sewerage Equal Plan Sheets (no change)	0	0	18	0	0	0	0	0	0	0	0	0	0	
74	Sanitary and Sewerage Equal Plan Sheets (no change)	0	0	18	0	0	0	0	0	0	0	0	0	0	
75	Sanitary and Sewerage Equal Plan Sheets (no change)	0	0	18	0	0	0	0	0	0	0	0	0	0	
76	Sanitary and Sewerage Equal Plan Sheets (no change)	0	0	18	0	0	0	0	0	0	0	0	0	0	
77	Sanitary and Sewerage Equal Plan Sheets (no change)	0	0	18	0	0	0	0	0	0	0	0	0	0	
78	Sanitary and Sewerage Equal Plan Sheets (no change)	0	0	18	0	0	0	0	0	0	0	0	0	0	
79	Sanitary and Sewerage Equal Plan Sheets (no change)	0	0	18	0	0	0	0	0	0	0	0	0	0	
80	Sanitary and Sewerage Equal Plan Sheets (no change)	0	0</												